

# Manual

## EMAS-Logo Generator



# Content

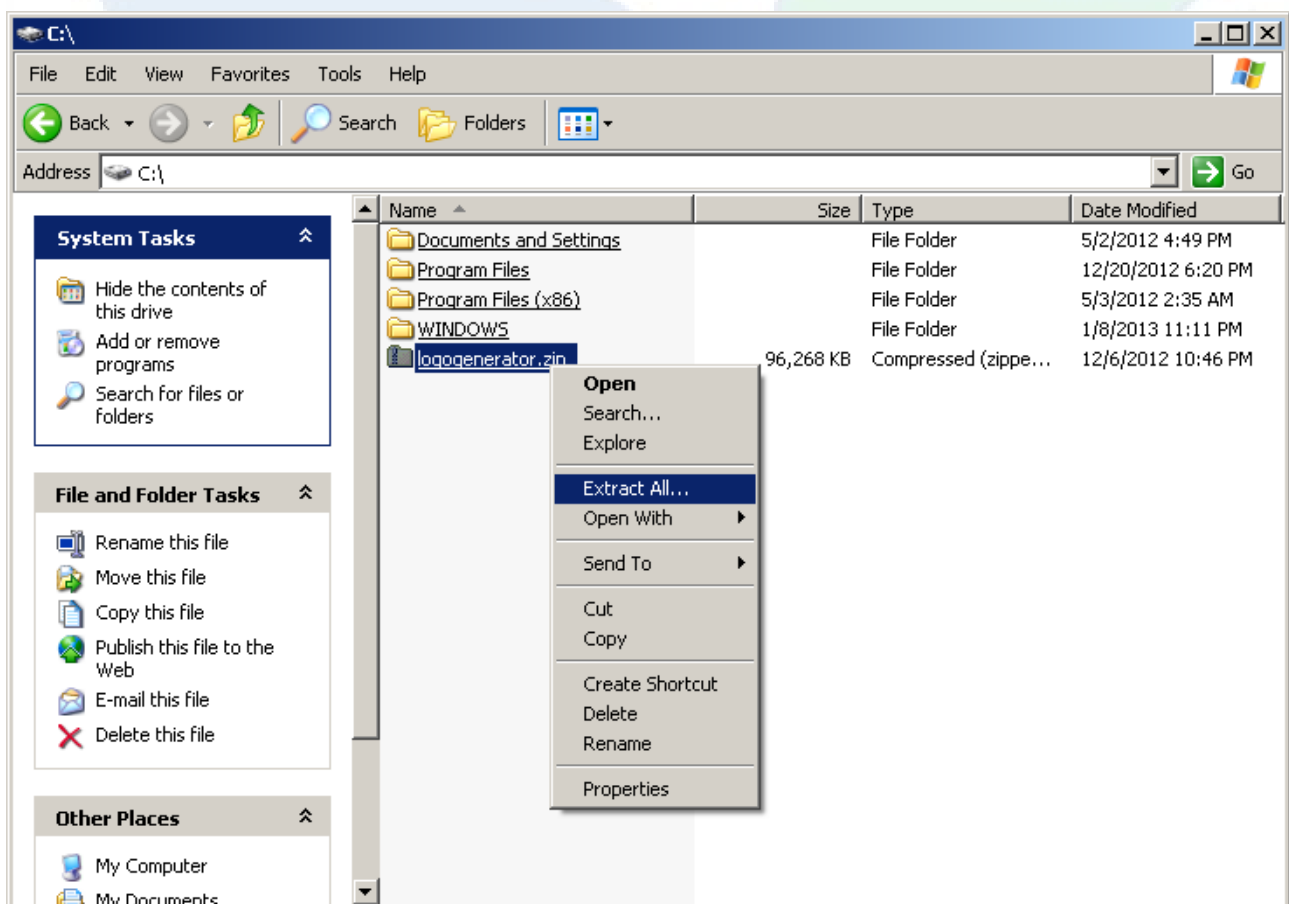
Introduction.....	3
Install EMAS Logo Generator.....	3
Uninstall EMAS Logo Generator.....	4
Start Screen.....	5
Create Logo.....	7
Settings.....	9
File Format.....	9
Colour Format.....	10
Logo Language.....	11
Country.....	12
Region.....	13
Registration Number.....	14
Advanced Controls.....	15
Logo Variants.....	16
EMAS logo with text "Verified environmental management" and registration number .....	16
EMAS logo with text "Verified environmental management.....	16
EMAS logo.....	17
Save Logo.....	17
General And Special Information, Explanations And Help.....	18
How to use the EMAS Logo.....	19
About EMAS III.....	20
EMAS III Documents.....	21
Useful Links.....	22
Exit.....	23

## Introduction

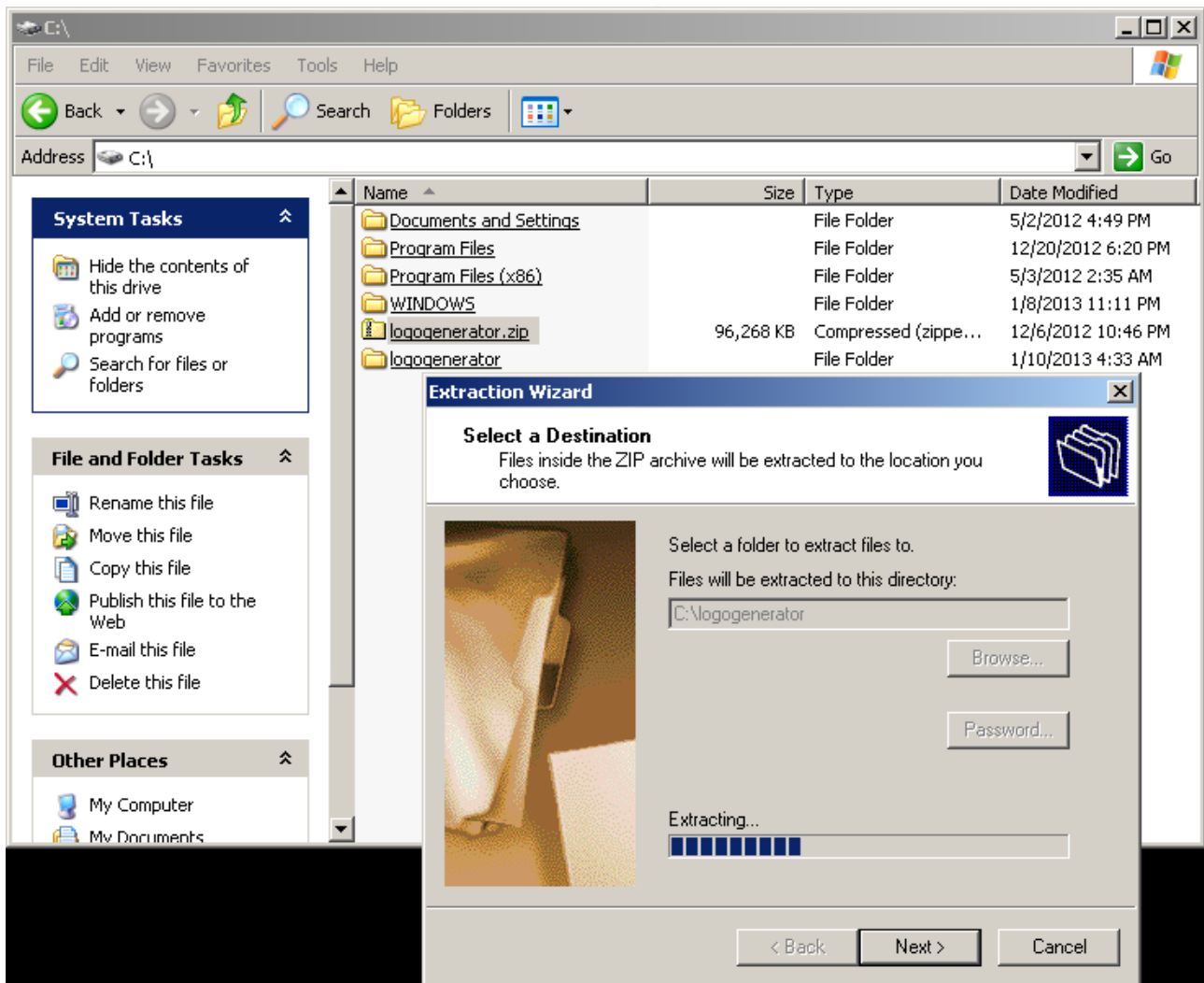
The new EMAS Logo Generator allows registered organisations to easily create their EMAS Logo with their specific registration number. To do so download the EMAS Logo Generator from the EU website ([http://ec.europa.eu/environment/emas/logocorner/logocorner\\_en.htm](http://ec.europa.eu/environment/emas/logocorner/logocorner_en.htm)) and install it. The EMAS Logo Generator will automatically notify about newer versions.

## Install EMAS Logo Generator

After the latest version of the EMAS Logo Generator archive has been downloaded, it needs to be extracted. In Windows Explorer simply right click on the downloaded zip archive file and select "Extract All" (Pic 1) and follow the on screen prompts to extract the archive to a folder (Pic 2).



Pic 1



Pic 2

After extracting has finished go to the folder created in the step above and find the executable file "emas3.exe". Double clicking the executable file starts the EMAS Logo Generator program and show the start screen.

The download archive file can be deleted after successful extraction.


## Uninstall EMAS Logo Generator

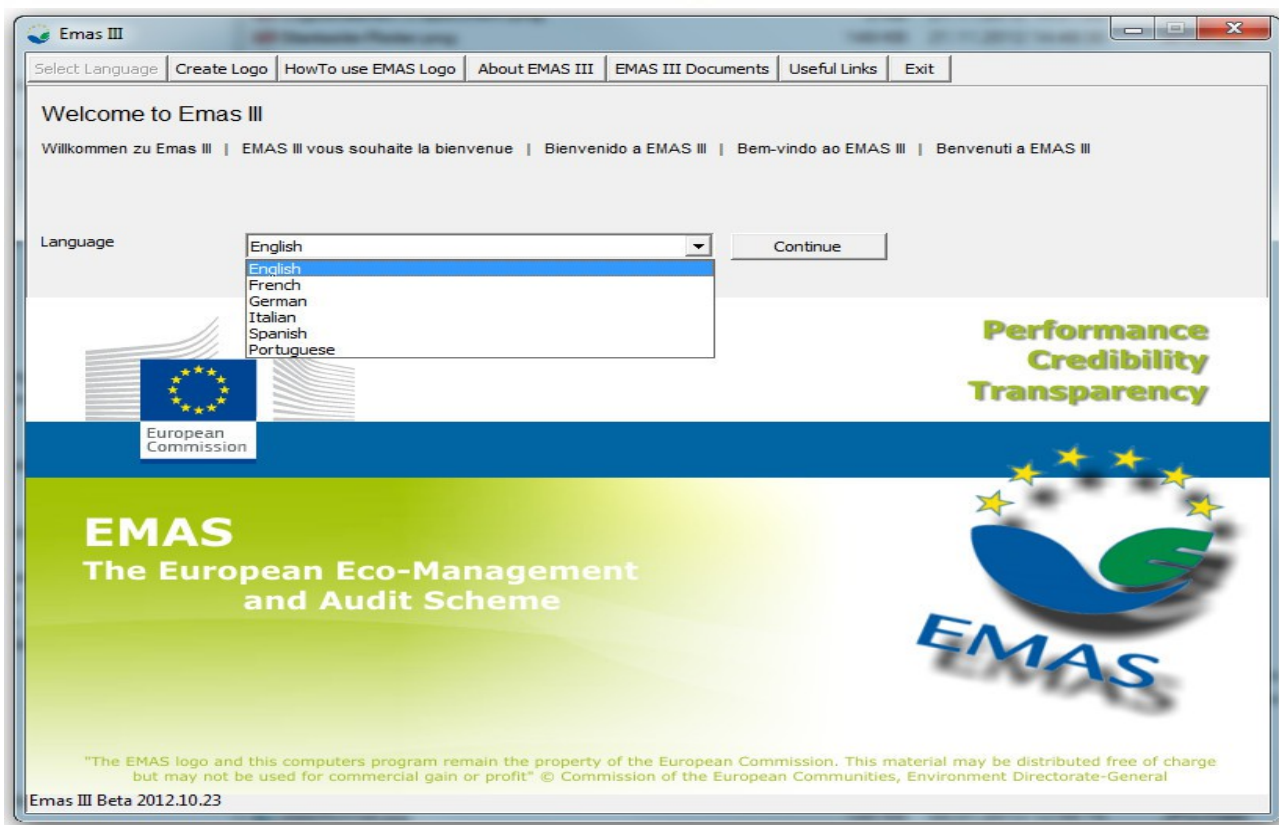
To uninstall the EMAS Logo Generator delete the folder and all its contents that was created when the archive was extracted for installation.

## Start Screen

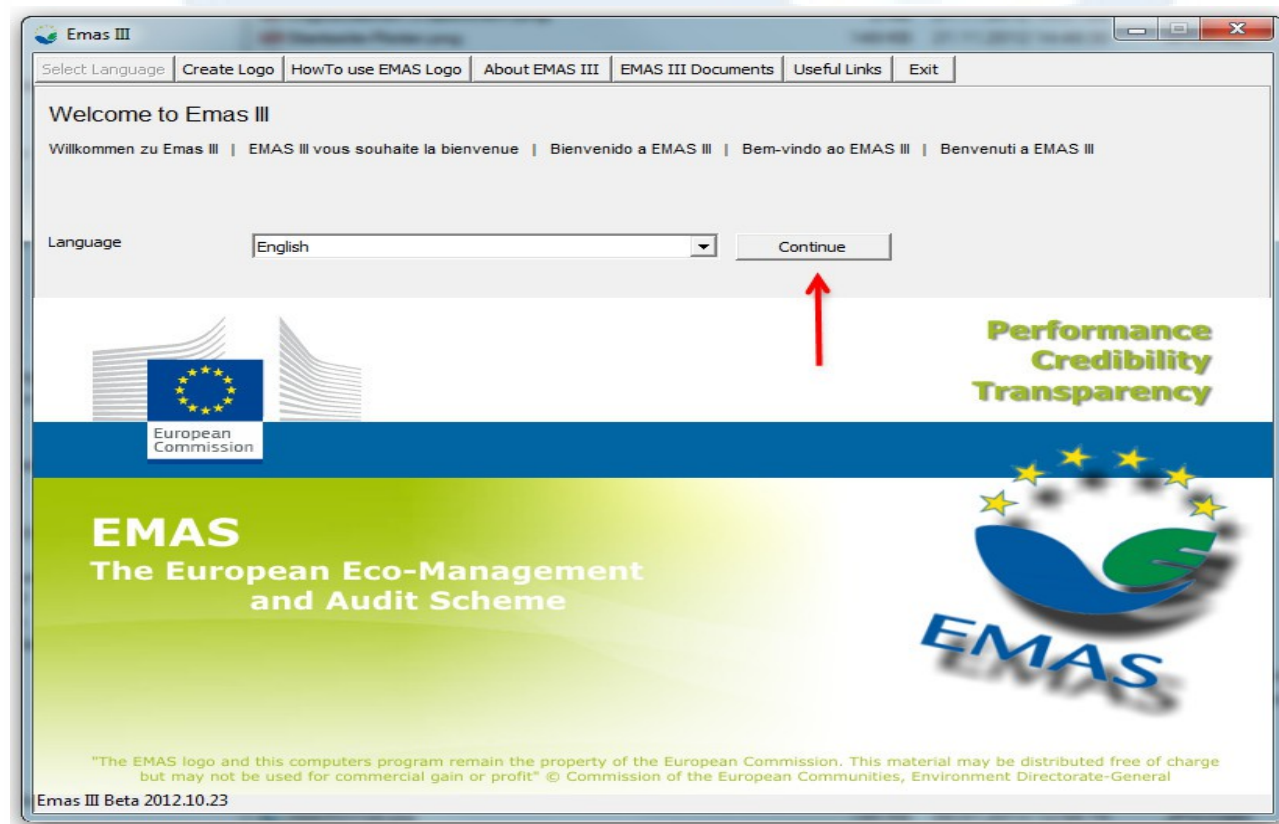


Pic 3

In order to work with the program first select the desired language. Clicking on the down arrow  on the right of the default language will reveal a drop-down menu that offers several languages to choose from (Pic 4): After the desired language has been selected for the interface of the EMAS Logo Generator click on the "Continue" button to confirm the selection and to switch to the next screen. (Pic 5).



Pic 4

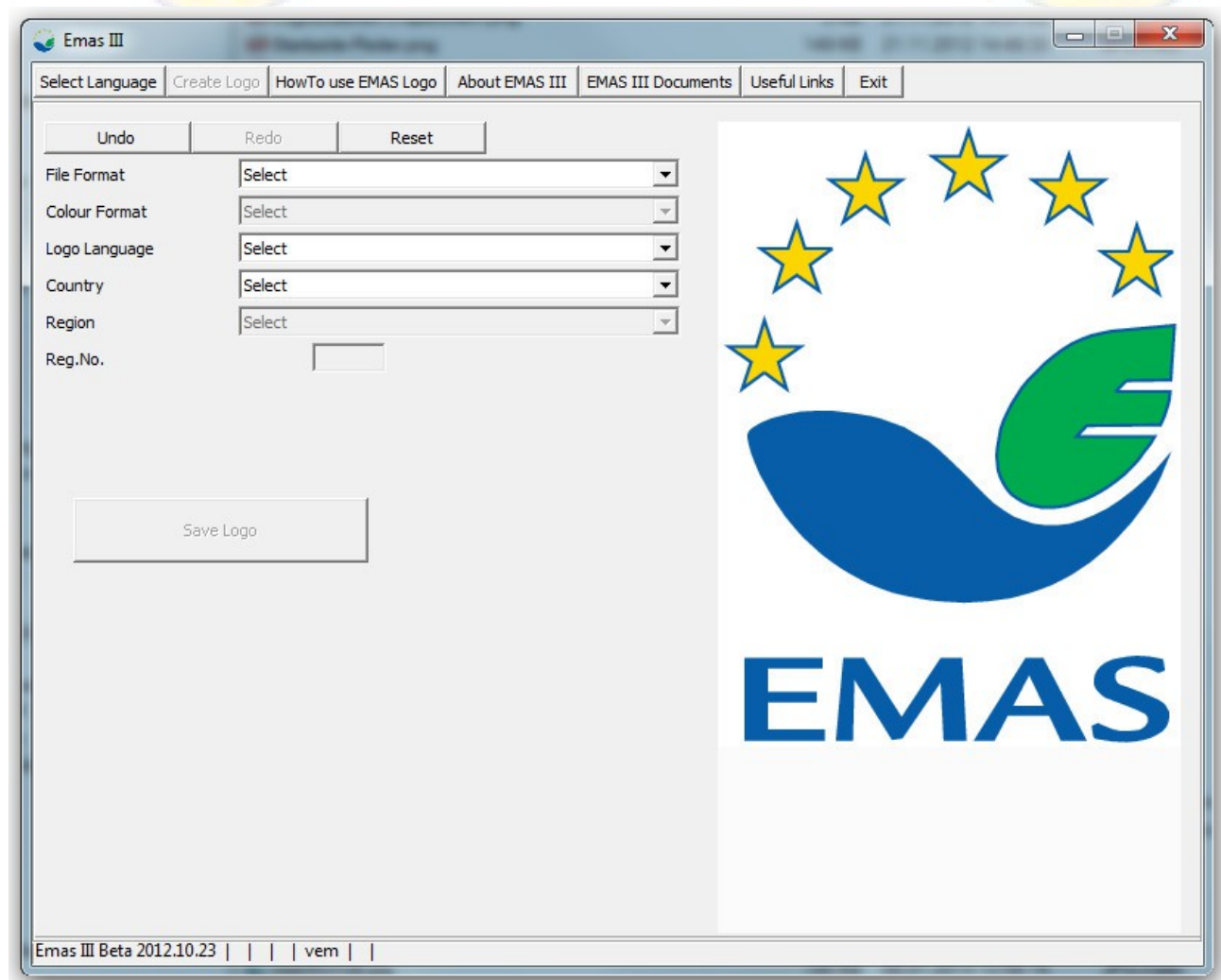


Pic 5



This is the main screen of the EMAS Logo Generator (Pic 6), which allows creating the desired EMAS logos.

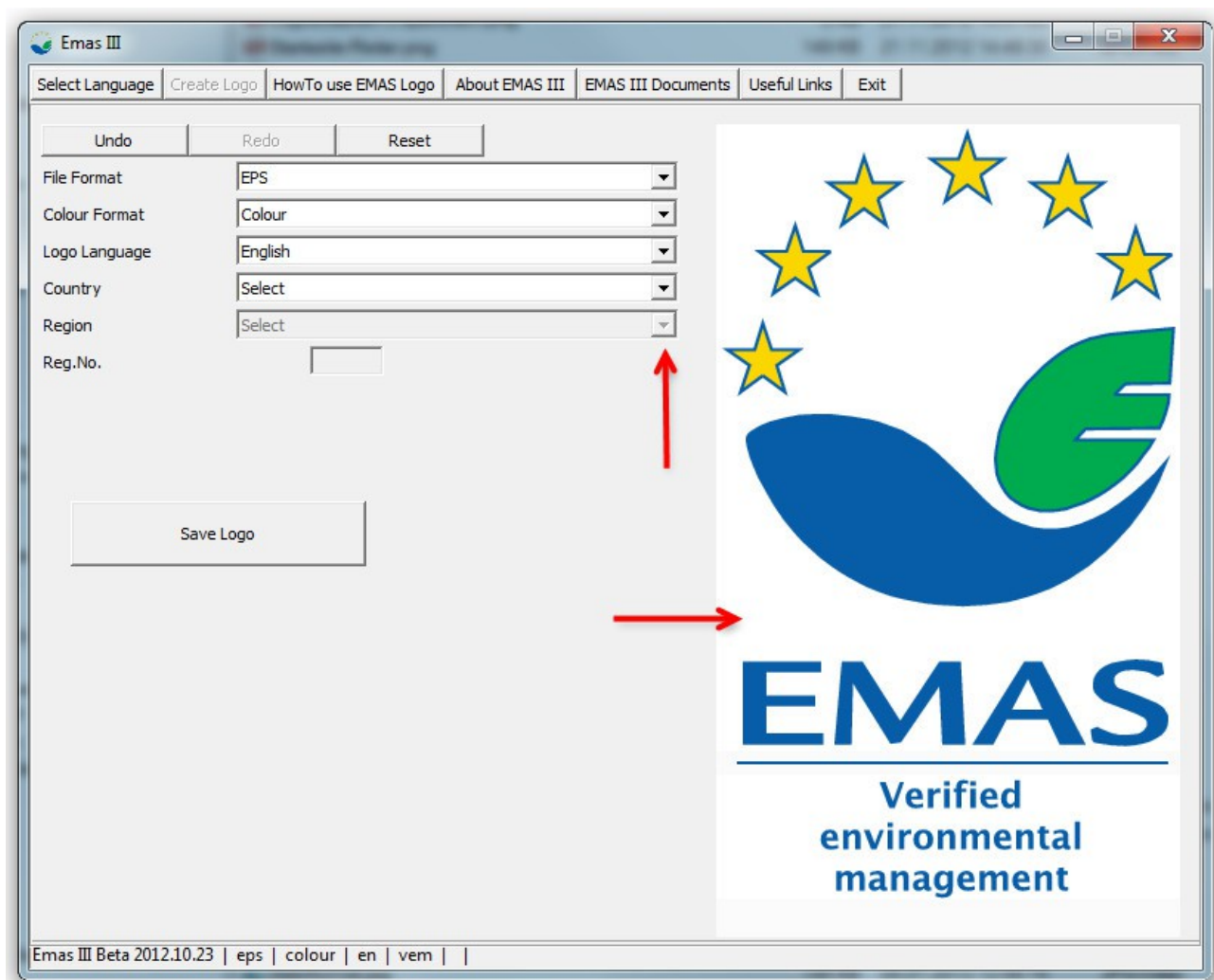
## Create Logo



Pic 6

The different drop-down menus and input fields help setting the parameters to create specific EMAS logos. Simply click on the down arrows or into the fields and select the desired options.

The preview of the EMAS logo on the right side is rendered with the current settings to check the parameters have the desired effect on the output later (Pic 7).



Pic 7

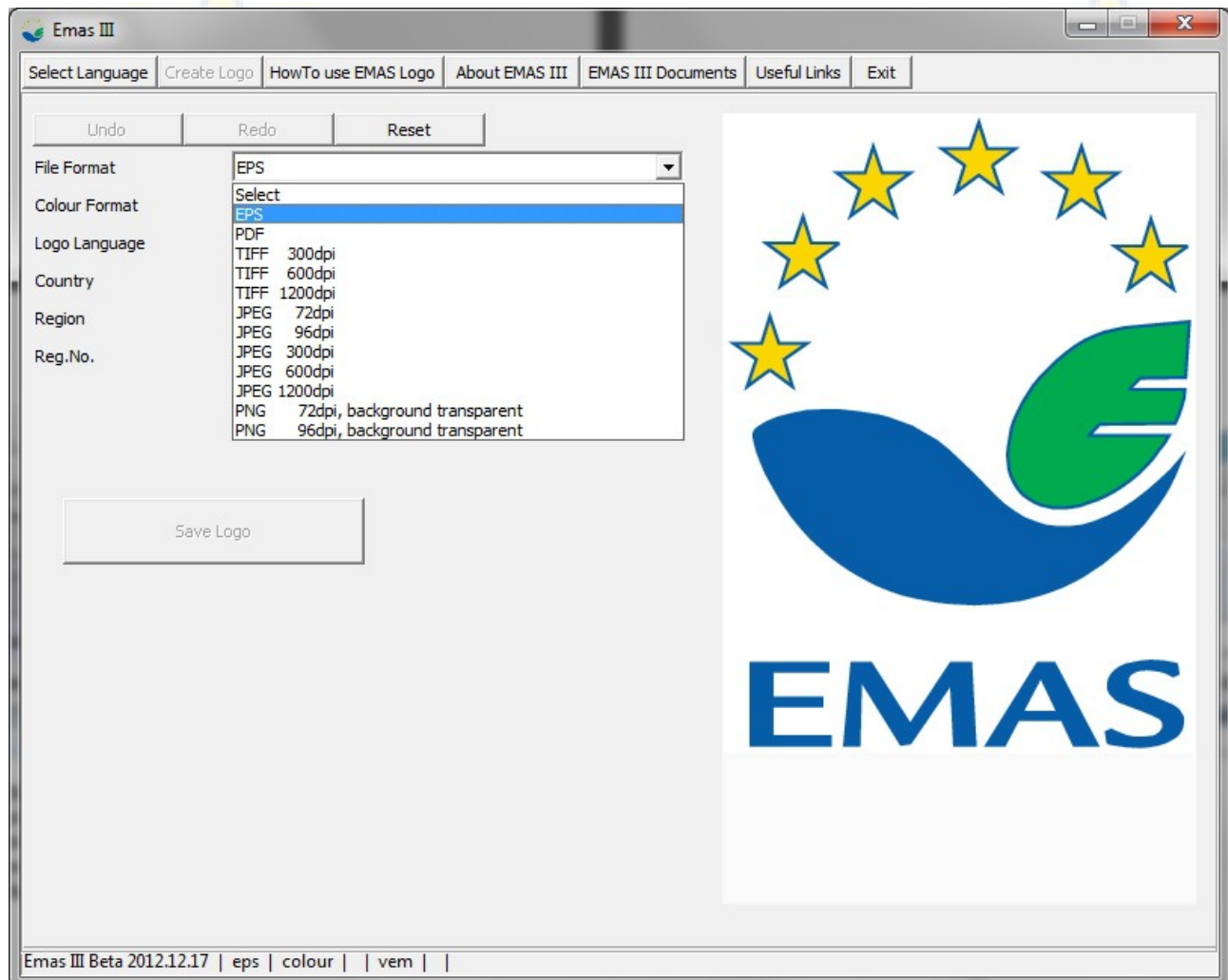
EMAS



## Settings

### File Format

Depending on the intended use of the EMAS logo a number of different file formats are offered.

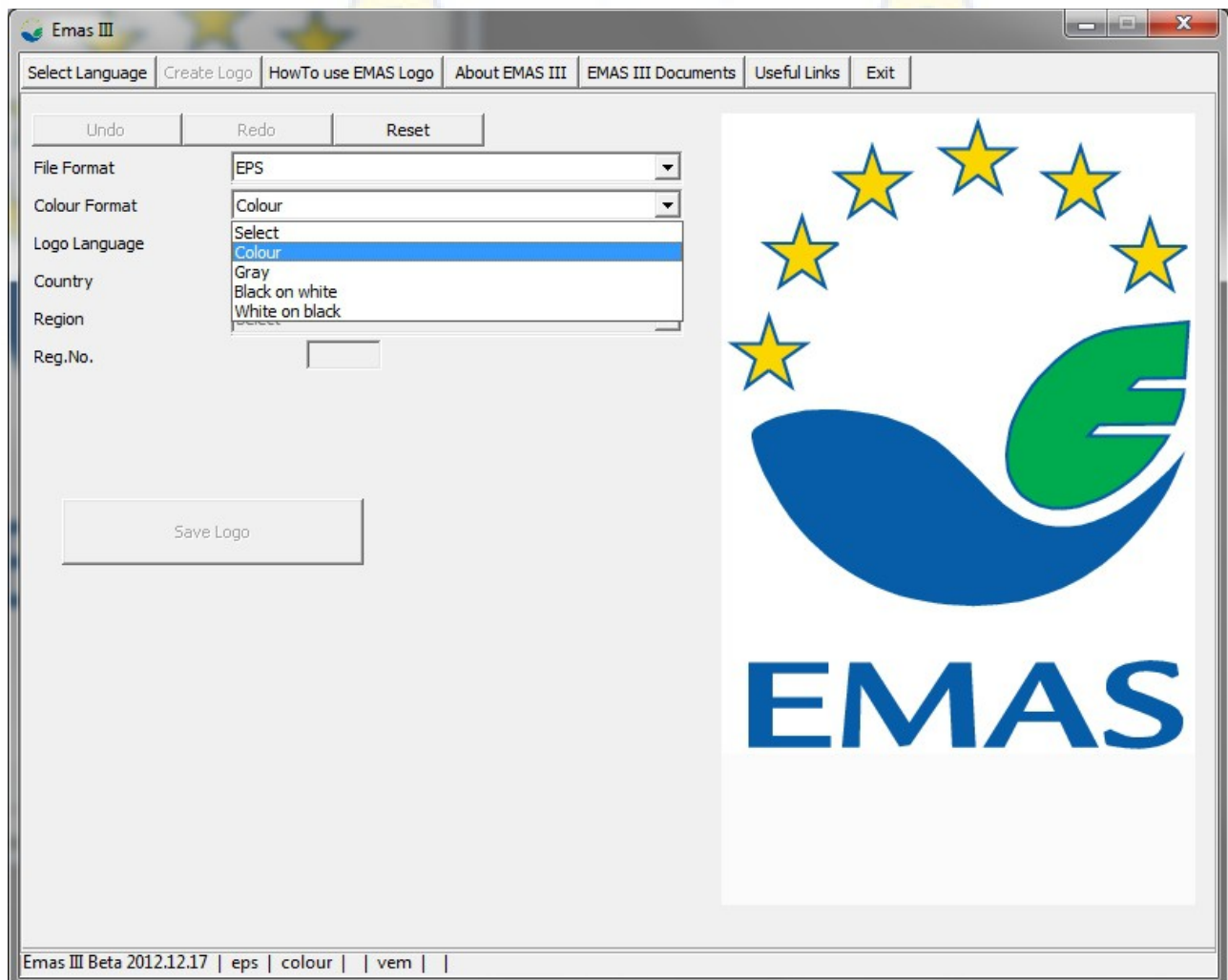


Pic 8

- **EPS, PDF und TIFF:** These file formats are typically used for printing. While EPS and PDF may be only requested by professional printers the TIFF format can also be used for local printing.
- **JPG:** With a default background of white this format is typically used for on-screen representation, like in online media or documents.
- **PNG:** Same as JPG, but the transparent background makes it easier to add the logo to web pages or documents which background colour is not white.

## Colour Format

The EMAS logo can be generated in different colour schemes.

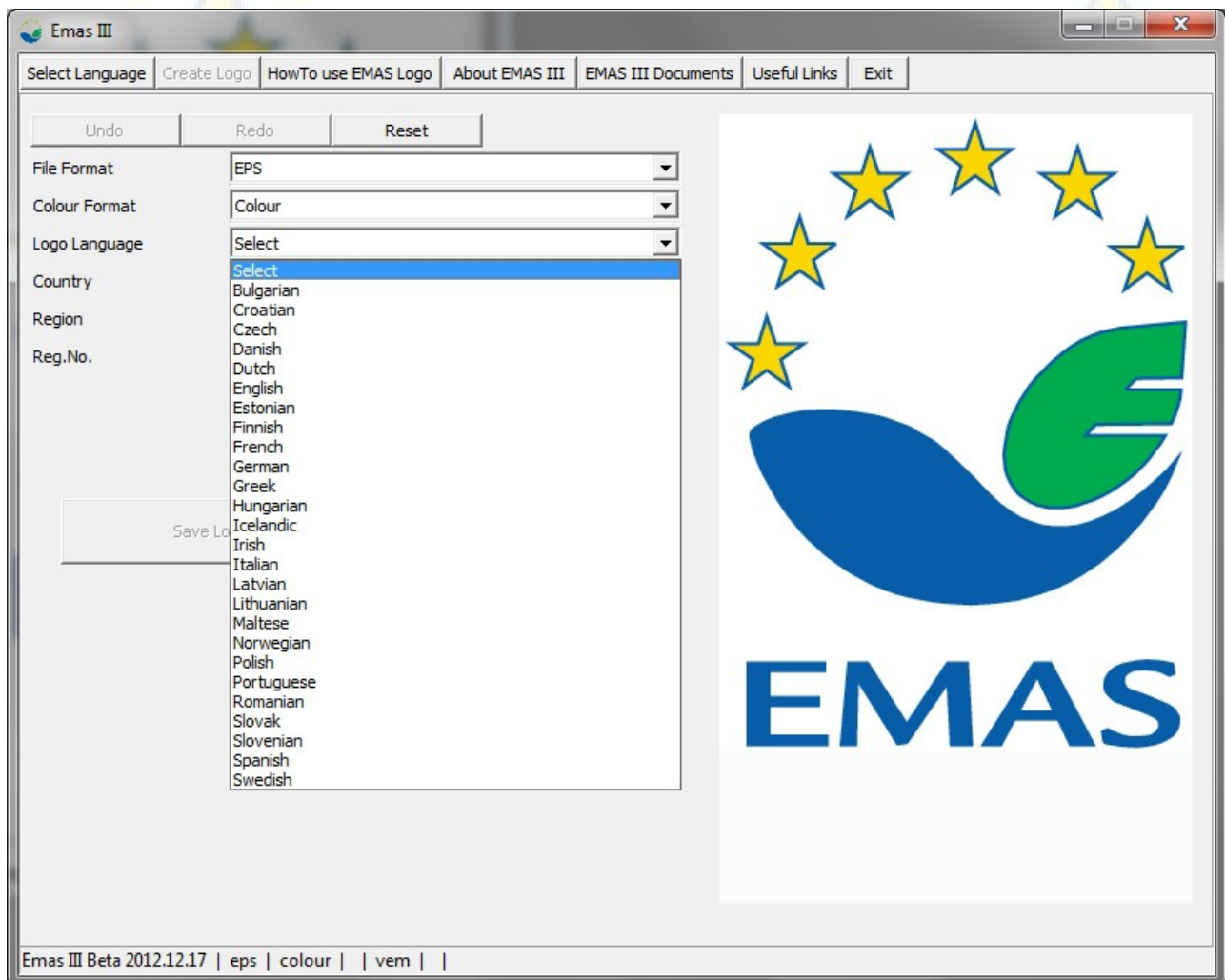


Pic 9

- ◆ **Colour:** the logo will be generated in the default EMAS colours
- ◆ **Gray:** the logo will be generated in the gray scale.
- ◆ **Black on white:** the logo will be generated in black on white background
- ◆ **White on black:** the logo will be generated in white on black background

## Logo Language

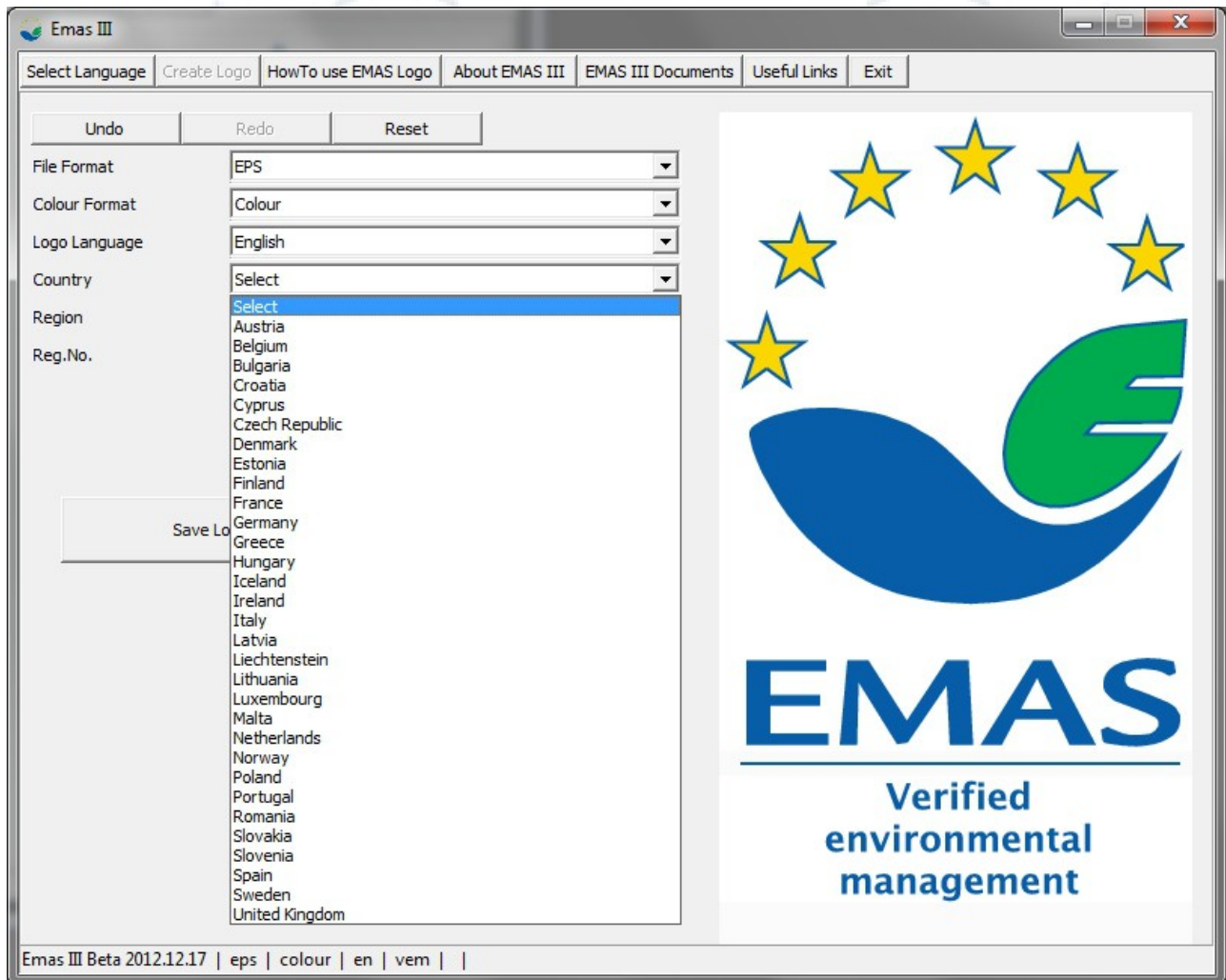
This drop-down selects the language for the text "Verified environmental management" beneath the logo.



Pic 10

## Country

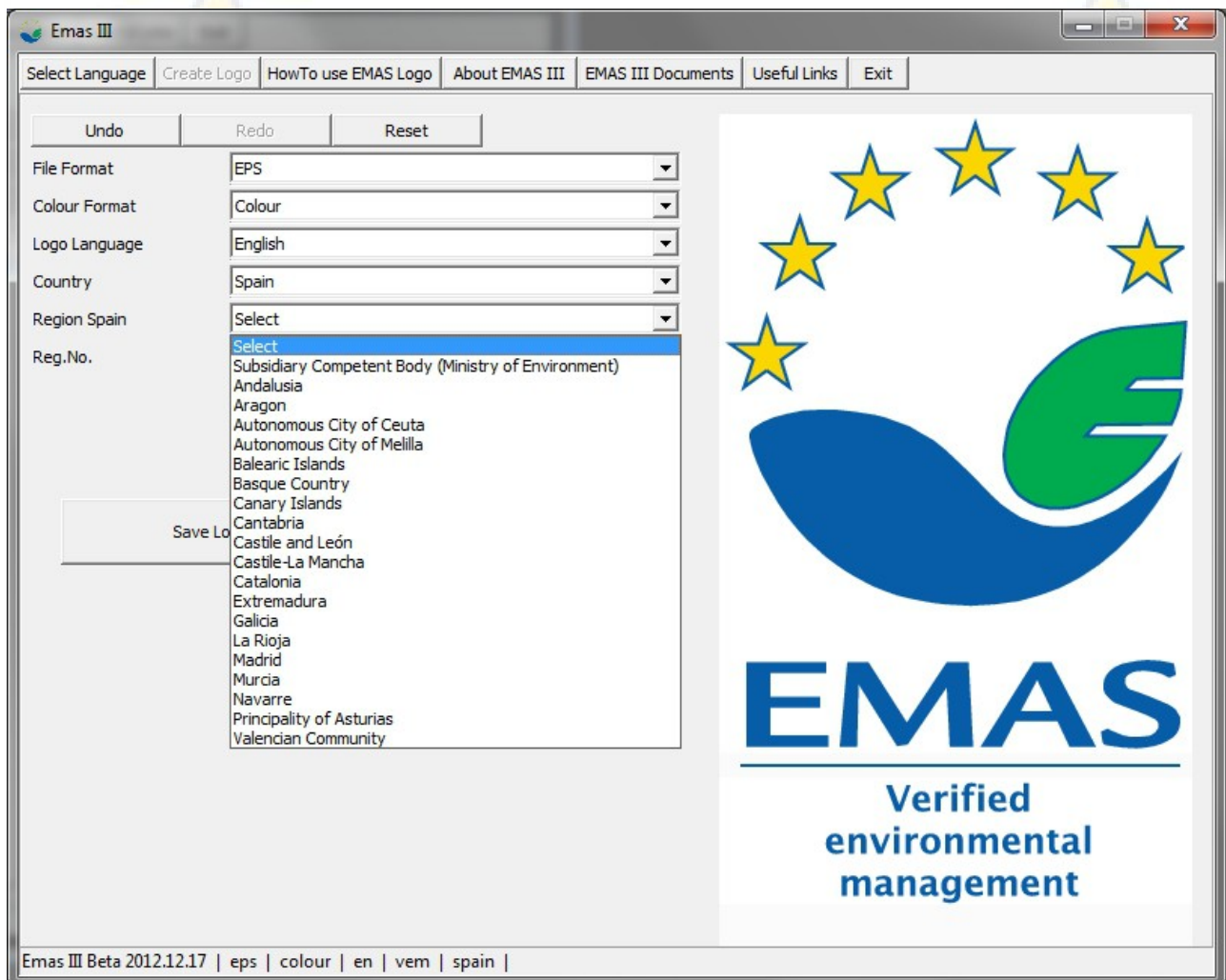
This drop-down selects the formatting and representation of the registration number.



Pic 11

## Region

In addition several countries require to select a region as well in order to format the registration number. This drop-down is only active when it is required.

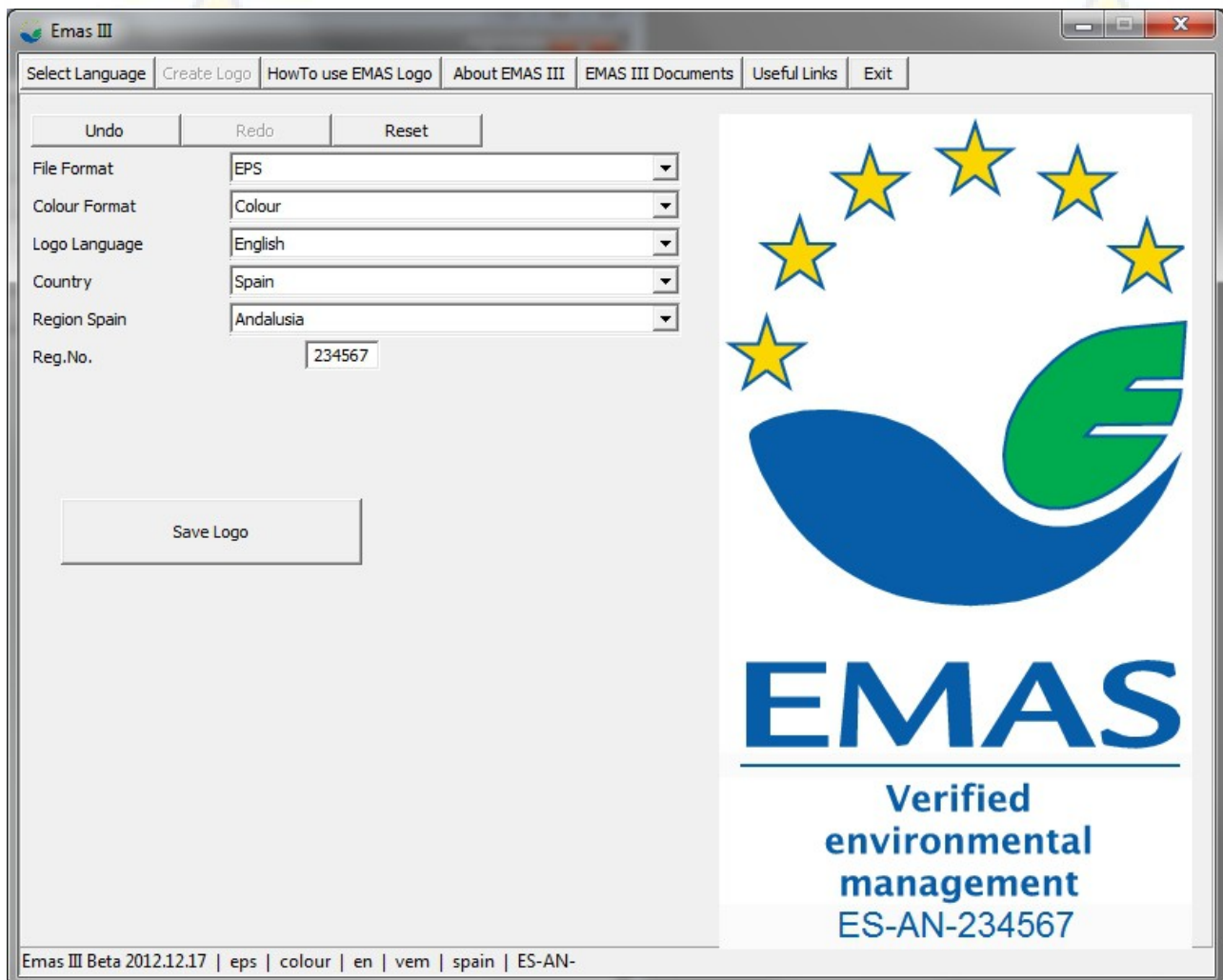


Pic 12

The country code and if applicable the region code is automatically added to the logo preview as soon as a registration number is entered.

## Registration Number

This field becomes available as soon as the country drop-down and if applicable the region drop-down have been selected. Here the allocated registration number is entered.



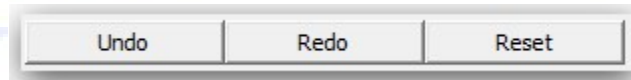
The screenshot shows the 'Emas III' software window. The 'Create Logo' tab is active. On the left, there are settings for File Format (EPS), Colour Format (Colour), Logo Language (English), Country (Spain), Region Spain (Andalusia), and Reg.No. (234567). A 'Save Logo' button is below these settings. On the right, a preview of the EMAS logo is shown, featuring a blue and green stylized 'E' with yellow stars above it. Below the logo, the text 'EMAS' is displayed in large blue letters, followed by 'Verified environmental management' and 'ES-AN-234567'. The status bar at the bottom reads 'Emas III Beta 2012.12.17 | eps | colour | en | vem | spain | ES-AN-'.

Pic 13



## Advanced Controls

There are three control buttons.



### Undo

Reverses the last change in the settings to the one before that. Repeatedly clicking the undo button reverses backwards step-by-step any number of changes.

### Redo

Restores the last undo back to its former settings.

### Reset

Sets all drop-down and fields back to the default parameters.

# EMAS

## Logo Variants

The EMAS Logo Generator allows the creation of three types of logos.

### EMAS logo with text "Verified environmental management" and registration number

All active drop-downs and fields need to be selected or filled out.

Undo	Redo	Reset
File Format	EPS	
Colour Format	Colour	
Logo Language	English	
Country	United Kingdom	
Region	Select	
Reg.No.	123456	



Pic 14

### EMAS logo with text "Verified environmental management"

Only select the drop-downs "File Format", "Colour Format" and "Logo Language".

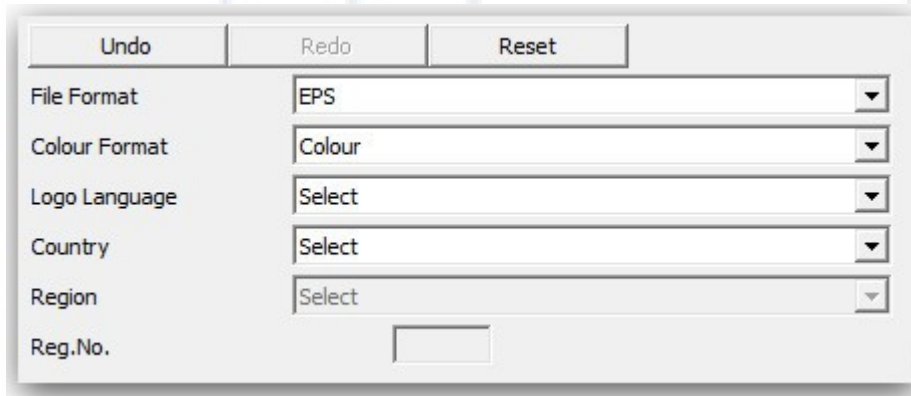
Undo	Redo	Reset
File Format	EPS	
Colour Format	Colour	
Logo Language	English	
Country	Select	
Region	Select	
Reg.No.		



Pic 15

## EMAS logo

Only select the drop-downs "**File Format**" and "**Colour Format**".



The screenshot shows a software interface for generating an EMAS logo. It features a header with three buttons: "Undo", "Redo", and "Reset". Below this is a form with several fields:

Field	Value
File Format	EPS
Colour Format	Colour
Logo Language	Select
Country	Select
Region	Select
Reg.No.	



Pic 16

## Save Logo

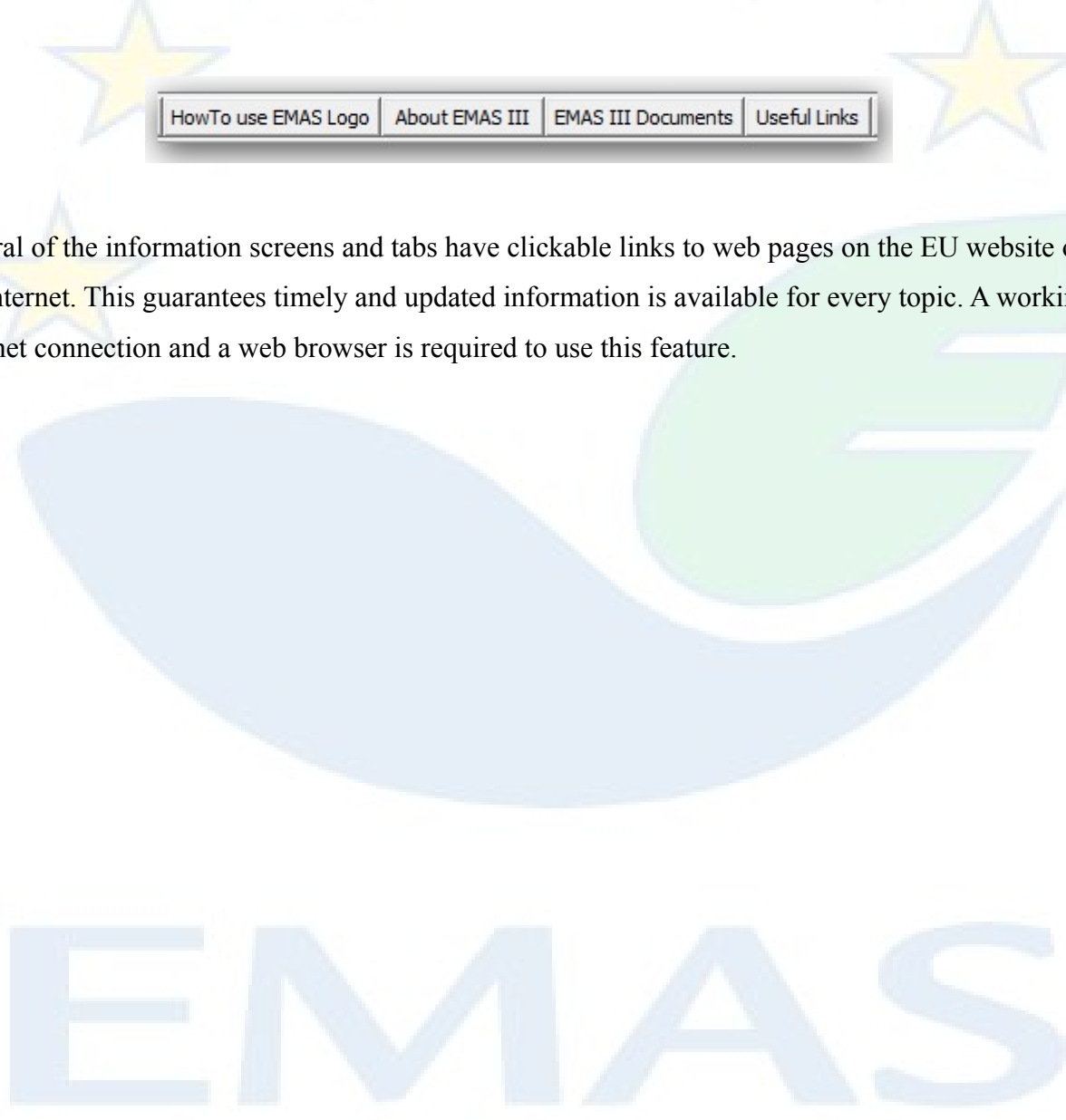
Whenever the parameters are sufficiently selected for logo generation, the button "Save Logo"



becomes available. When clicking the button a file browser window will open to select a folder and filename for the logo to be saved to. The logo is generated in the selected folder by clicking the "Save" button on the file browser window. From this location the logo can be copied, printed or send by email.

## General And Special Information, Explanations And Help

The main menu of the EMAS Logo Generator offers a number of further buttons with helpful information about the EMAS Logo and about its use and guidelines.

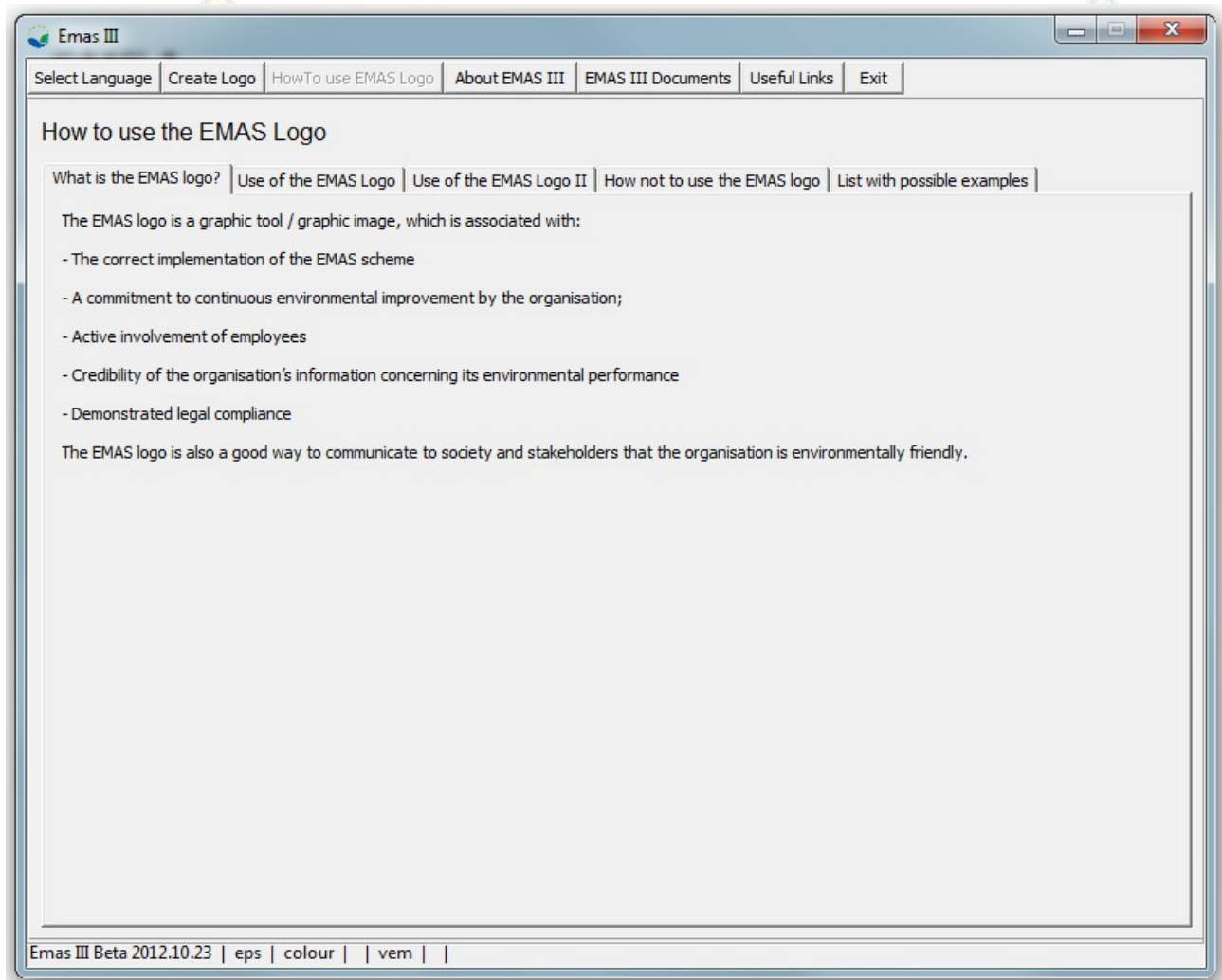


HowTo use EMAS Logo	About EMAS III	EMAS III Documents	Useful Links
---------------------	----------------	--------------------	--------------

Several of the information screens and tabs have clickable links to web pages on the EU website on the Internet. This guarantees timely and updated information is available for every topic. A working Internet connection and a web browser is required to use this feature.

## How to use the EMAS Logo

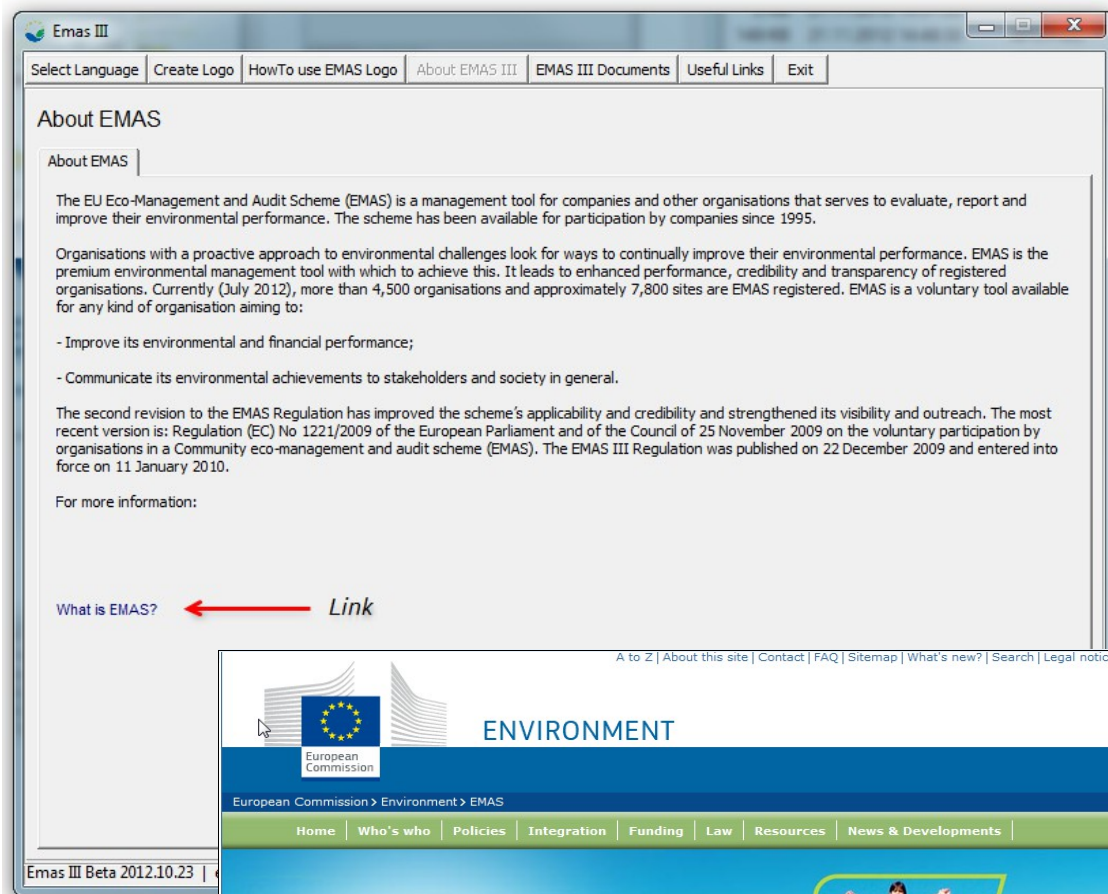
This section details the possible uses and guidelines of the EMAS Logo. Furthermore it lists examples of use cases. (Pic 17)



Pic 17

## About EMAS III

The "About EMAS III" section (Pic 18) explains the ecological goals and the use cases of the EMAS certification for companies that want to participate in these goals. There is a link to the EMAS web site for more detailed information (Pic 19).



Pic 18

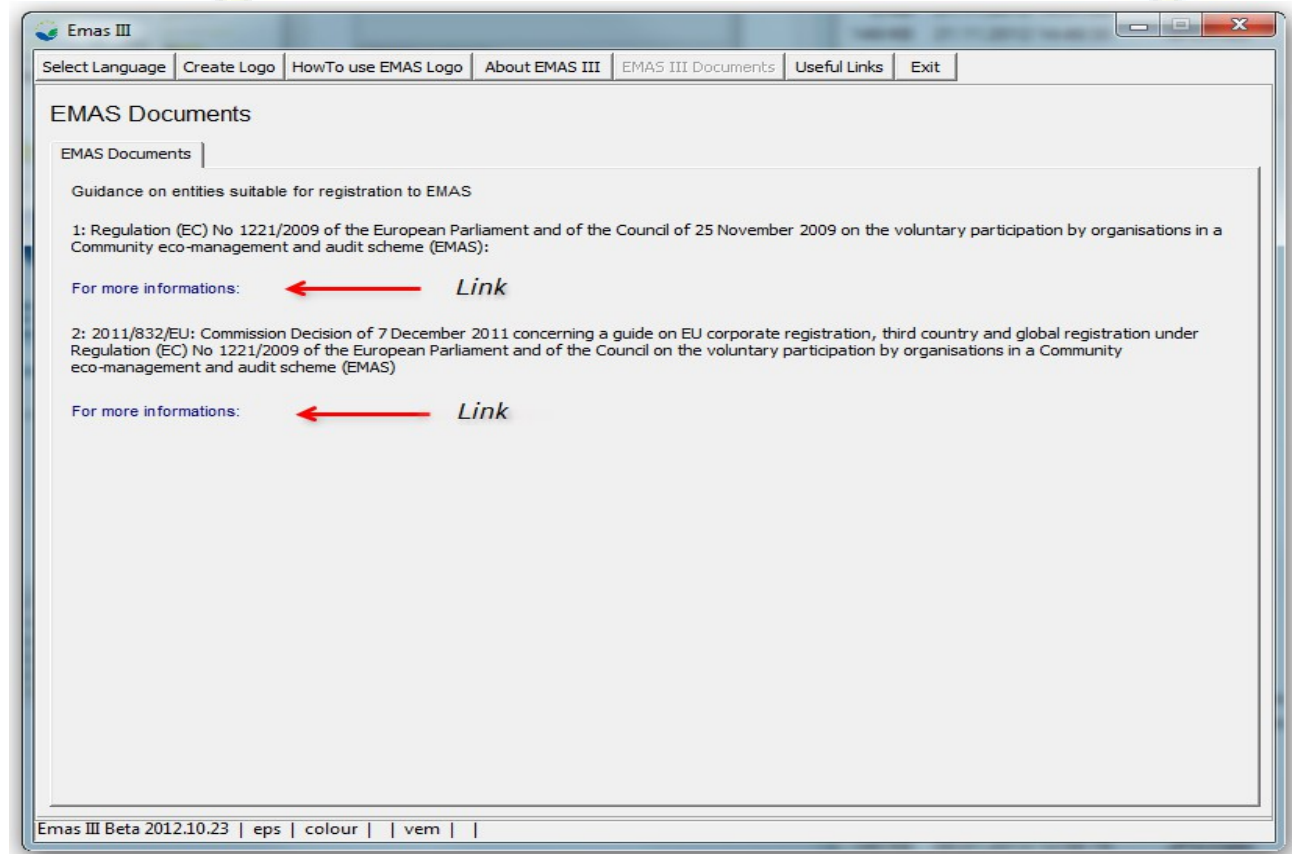
Pic 19



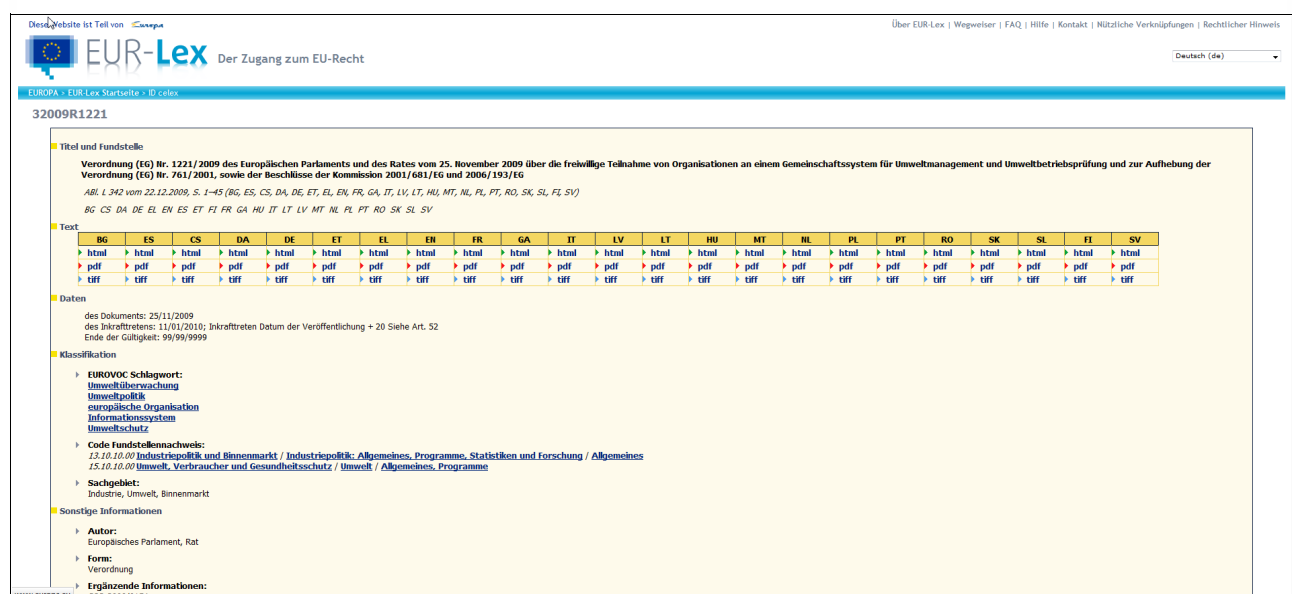


# EMAS III Documents

This section (Pic 20) informs about the guidance of the EU and further particulars the decrees and decisions of the European parliament (Pic 21).



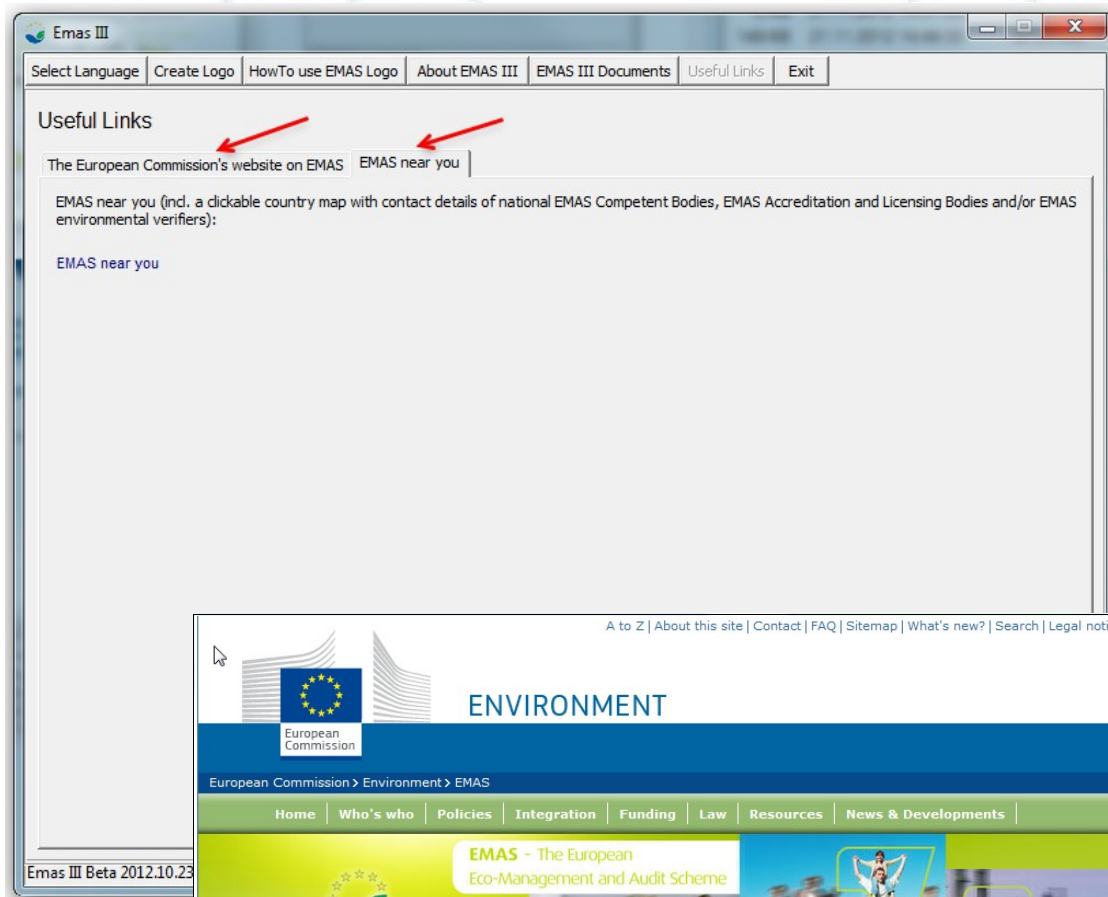
Pic 20



Pic 21

## Useful Links

The two tabs in this section (Pic 22) offer links to more general information about EMAS and how to find local EMAS Institutions (Pic 23).



Pic 22



Pic 23

## Exit



Clicking this button will close the EMAS Logo Generator.

